

Oct. 30 and 31, 2024



OREGON
HEALTH
AUTHORITY



OREGON
HEALTHCARE.gov

State-based Marketplace Project Partner Listening Sessions Results

Amy Coven

Communications and Public Engagement Analyst

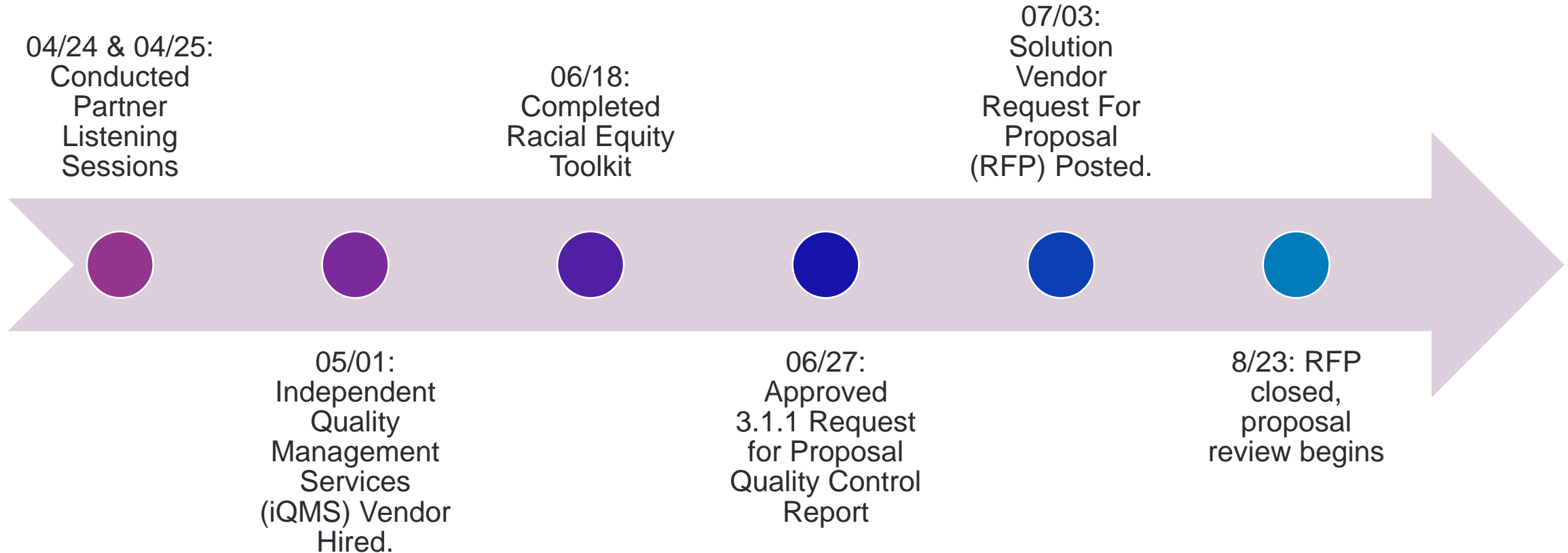
Listening sessions: Purpose

To solicit feedback from key partners (insurance carriers, community partners who provide application assistance, and insurance agents/brokers) about their experience using HealthCare.gov and desired improvements within the new state-based marketplace (SBM) enrollment and eligibility platform and consumer assistance center.



Project update

Brief project updates: Recent activities

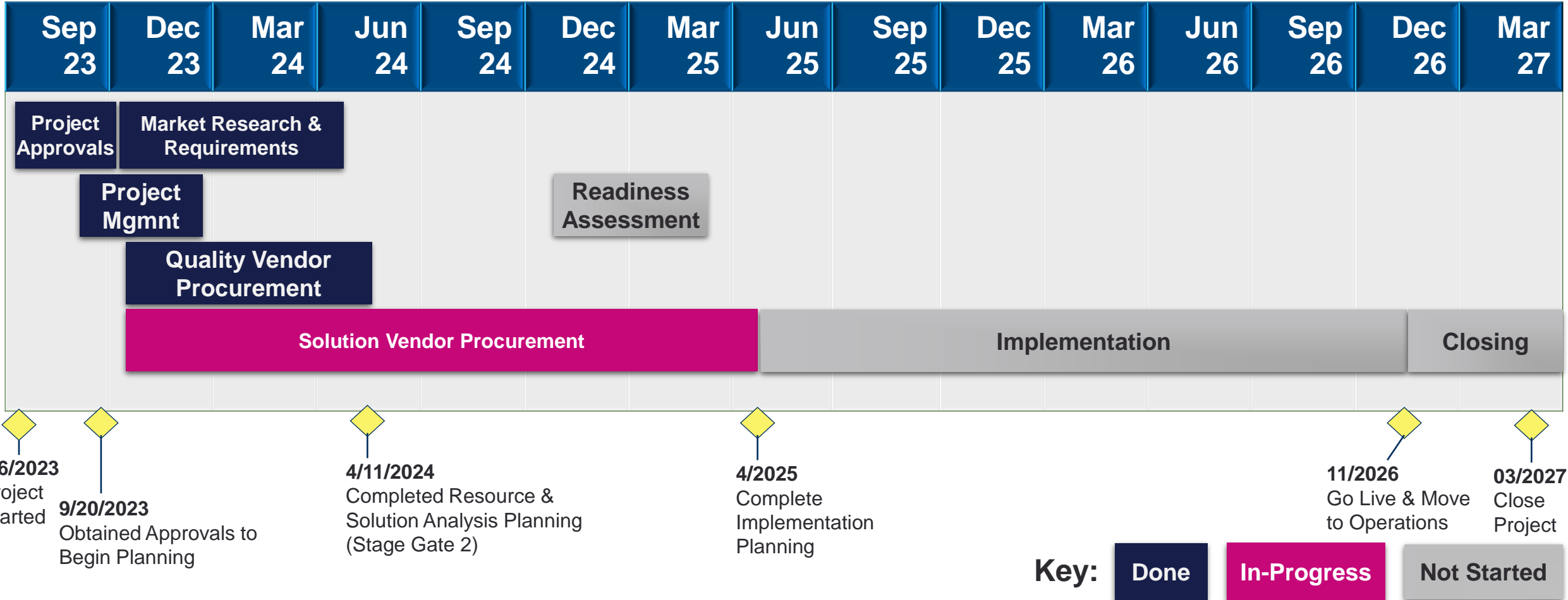


SBM Project timeline

Status: **On Track**

Phase: Planning

Total Project Duration: 4 Years & 8 Months



7/6/2023
Project Started

9/20/2023
Obtained Approvals to Begin Planning

4/11/2024
Completed Resource & Solution Analysis Planning (Stage Gate 2)

4/2025
Complete Implementation Planning

11/2026
Go Live & Move to Operations

03/2027
Close Project



Today's topic: Policy Option Package 424

What is a Policy Option Package?

- A proposal to change the level of service or funding sources for activities authorized by the Legislature, or to propose new program activities not currently authorized.
- Legislature has long session every odd year. This includes budget setting and approvals.
- 2025 legislative session begins Jan. 25 and will end by the end of June.

POP for 2025 legislative session

Phase one (2023-2025)

- Research and planning purposes through the request for proposals (RFP) stage
- Drafting of the required federal blueprint to transition from an SBM-FP to a full SBM, and vendor selection
- Stage-gate review by Enterprise Information Services (EIS) through Gates one and two that verify the corresponding project planning artifacts and requirements

Phase two (2025-2027)

- Internal, external, and contracted sources for specialized expertise in the fields of project management, technology integration and implementation, procurement, quality assurance, data, legal, security, privacy, community outreach and education, training, and transition to ongoing operations

POP 424: SBM project second phase funding

SBM solution vendor (enrollment and eligibility platform and consumer assistance service)

Independent quality management services

Staff and other expenses for expended operations (ex. community outreach and education, training, and IT security and privacy)

Transition to maintenance and operations

	Other Funds	Total Funds	Positions	FTE
Pricing:	\$25,000,000	\$25,000,000	15	10.75

Discussion

Feedback and questions asked

Assisters

Does the budget request for the employees include bilingual required staff?

Insurance agents/
brokers

Is there a detailed budget available that supports the request for \$25M?

Insurance carriers

None

Stay up-to-date

- Questions?
Email us at marketplace.sbmproject@oha.Oregon.gov
- Sign up for email updates
orhim.info/SBMupdates
- Keep an eye on our project website
orhim.info/SBMtransition
- **Have a question?** See if it has been asked and answered. There is also a form that you can use to submit questions and comments!
orhim.info/sbmfaqs

Future Listening Sessions

- Quarterly (Jan., April, July, Oct.) through Jan. 2027
- Last week of the month

Assisters

Last Weds. of the month
2-3:30 p.m.

orhim.info/SBMLS-Assisters



Agents/Brokers

Last Thurs. of the month
2-3:30 p.m.

orhim.info/SBMLS-Agents



Carriers

Last Thurs. of the month
3:30-4:30 p.m.

orhim.info/SBMLS-Carriers



Thank you

You can get this document in other languages, large print, braille or a format you prefer free of charge. Contact Amy Coven at amy.coven@oha.Oregon.gov or 503-943-0164 (voice/text). We accept all relay calls.

Health Policy and Analytics Division
Oregon Health Insurance Marketplace
500 Summer Street E-56
Salem, OR 97301
855-268-3767
OregonHealthCare.gov | CuidadoDeSalud.Oregon.gov

